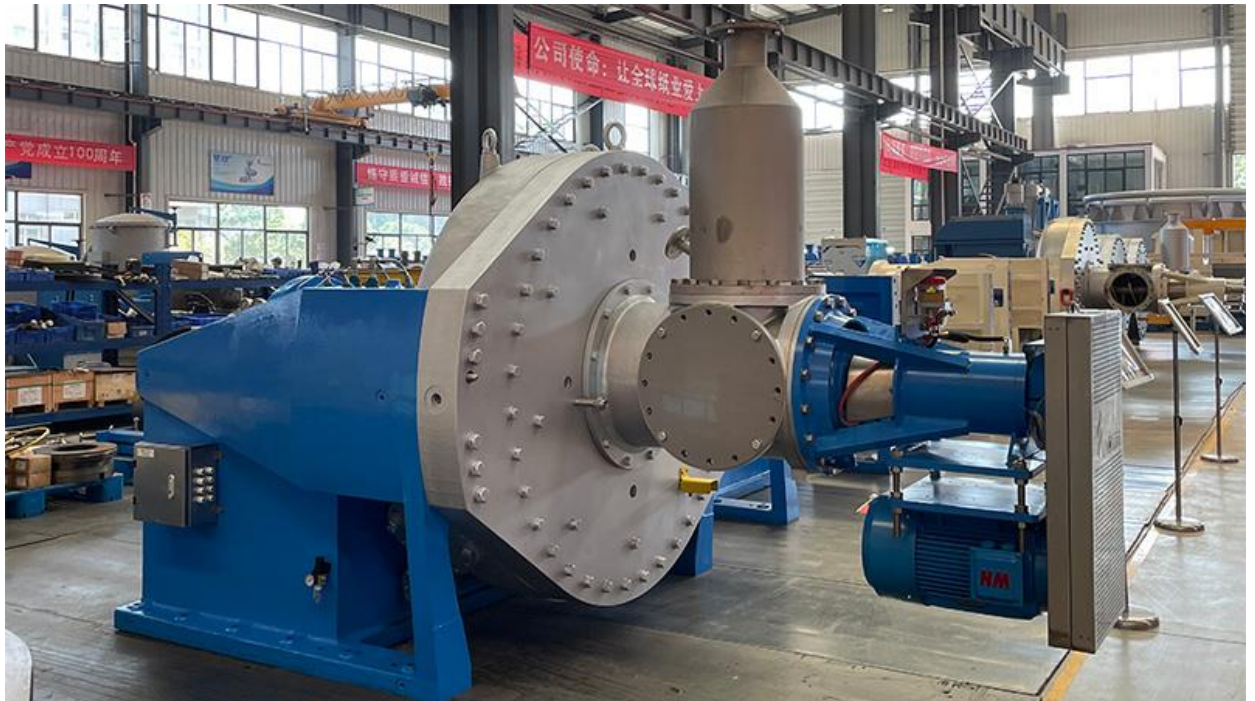


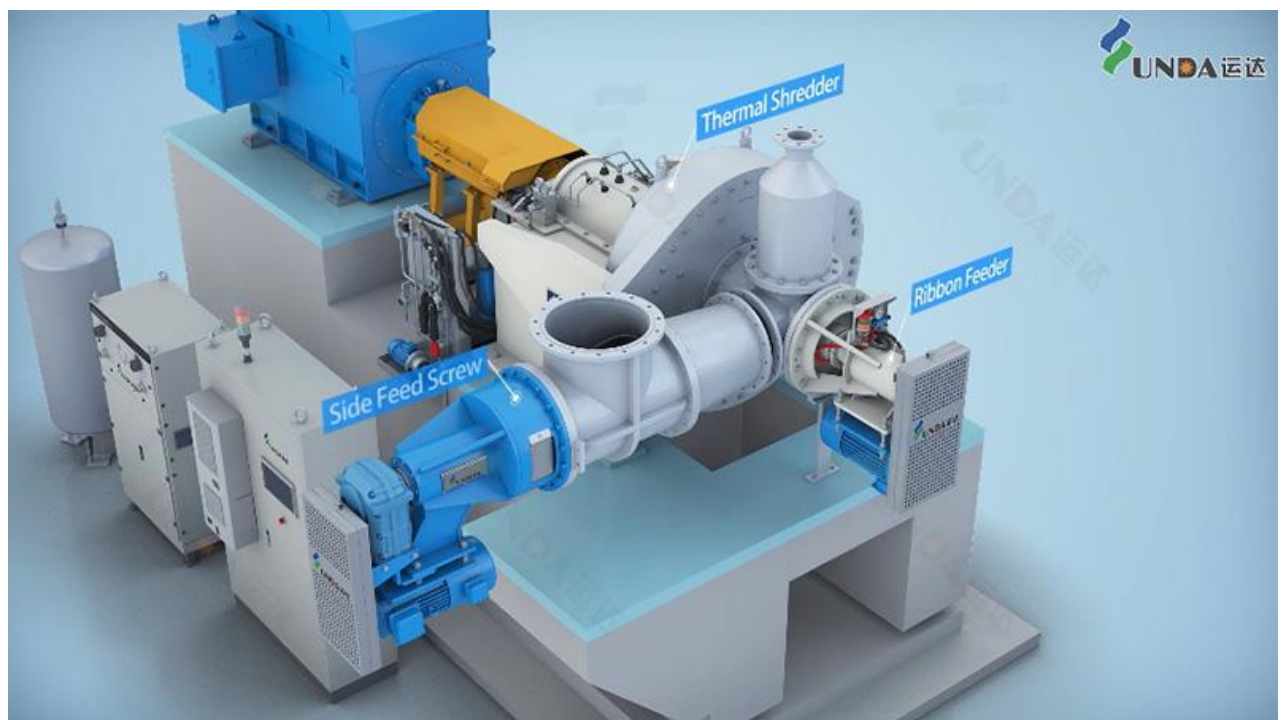
# High Consistency Refiner

Yunda Innovation design of the thermal shredder have a number of patents, which has superior performance, safety and reliability and wide range of raw materials. The main structure is composed of three parts: Thermal Shredder, Ribbon Feeder and Side feed Screw.





High Consistency Refiner(Thermal Shredder), Yunda Innovation design of the thermal shredder have a number of patents,which has superior performance, safety and reliability and wide range of raw materials. The main structure is composed of three parts: Thermal Shredder, Ribbon Feeder and Side feed Screw.



Raw materials such as wood chips, bamboo chips are going into the Host Pulping Zone through the high-speed rotating ribbon feeder, and

after pulping chips enter the fiber coarse refining zone and fiber hair-like shreds zone. And it shredded into uniform hair-like shreds under the action of the rotary and stationary discs, where the chemicals are added at the same time. Compared to the chips, the hair-like shreds has a larger specific surface and higher chemical reaction efficiency, which reduce chemical consumption and pollution.



## Advantage

- Compared to traditional high consistency refiners, Yunda Innovative Thermal Shredder has multi- advantage:
- The clearance between refiner plates is accurately adjusted through electronic and hydraulic control, which is up to 0.01mm;
- The Thermal Shredder is equipped with shock sensors and vibration sensors to ensure safe and stable operation of the equipment;
- Dynamic balancing comes with G2.5 level accuracy, which ensure smooth operation and lower noise;
- Adopting a patented rubber damping limit device to ensure stability of operation process;
- Replacing the refiner plates does not require dismounting the pipeline, and it equipped with a refiner plates holder and specialized

tooling, which shortens the time for replacing the refiner plates, reduces downtime and improves start-up efficiency.

Yunda Thermal Shredder is energy-saving, high efficiency, stable and reliable, comparable to international first-class brands; It is a key equipment for i-CTMP.

## Technical Data

Model	GPM244	GPM250	GPM256	GPM262	GPM268
Configuring Refiner Size/mm	1120	1270	1420	1575	1728
Refiner Size/inch	44"	50"	56"	62"	68"
Density/%	25-35	25-35	25-35	25-35	25-35
Capacity/(T/D)	90-140	120-180	170-260	240-340	300-450
Improve karsting after grinding/° SR	10-15	10-15	10-15	10-15	10-15
Design pressure of grinding chamber/Bar	8Bar	8Bar	8Bar	8Bar	8Bar
Spindle rotation speed (50Hz/60Hz) /rmp	1500/1800	1500/1800	1500/1800	1500/1800	1500/1800
power/KW	1800kw-3550kw	2500kw-4500kw	4000kw-7100kw	5600kw-9000kw	10000kw-15000kw



*High Consistency Refiner Work Site*



*High Consistency Refiner Work Site*

